

<b>Te Whatu Ora</b> Health New Zealand Hauora a Toi Bay of Plenty	<b>RESEARCH – LOCALITY APPROVALS PROCESS</b>	<b>Policy 2.1.7 Protocol 2</b>
<b>RESEARCH PROTOCOL</b>		

## STANDARDS TO BE MET

### 1. Approvals Process – Investigator led studies.

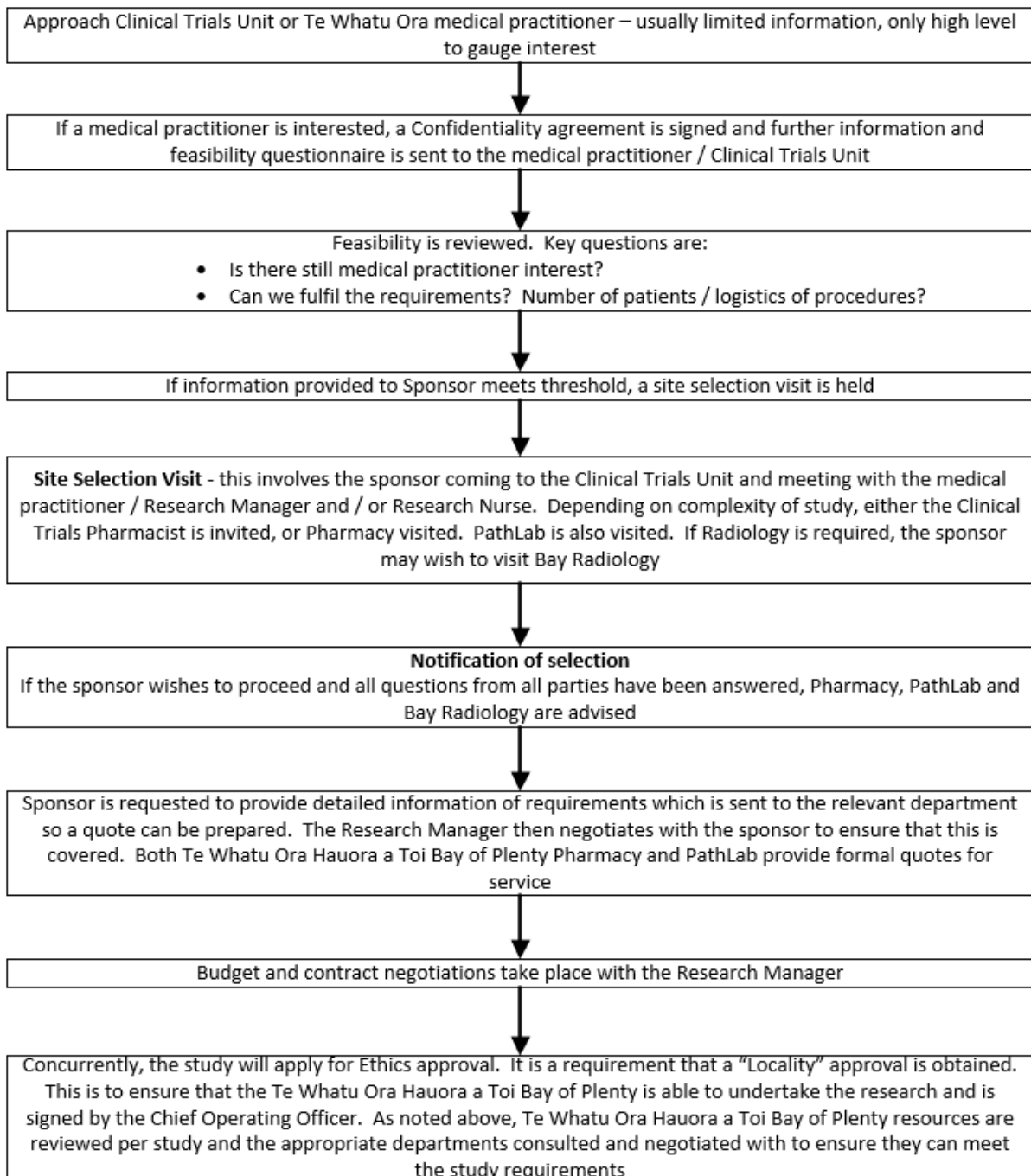
In order to obtain authorisation, researchers must have completed steps 1 – 6 below:

Step	Phase	Actions Required
1	Service Consultation	<ul style="list-style-type: none"> <li>Consult your local Head of Department / Service Leaders to ensure appropriateness of study / confirm resources available.</li> <li>Nurses undertaking a research topic as part of post graduate study must also have their research project endorsed by the Director of Nursing.</li> </ul>
2	Maori Consultation	<ul style="list-style-type: none"> <li>Undertake Maori Consultation as per local process</li> </ul>
3	Ethics Review	<ul style="list-style-type: none"> <li>Proceed with relevant Health and Disability Ethics Committee (HDEC) or Institutional Ethics Committee review if required.</li> </ul>
4	Research Office Review	<ul style="list-style-type: none"> <li>Complete the Research Locality Approval Application</li> <li>Submit application to the Research Office for Review</li> </ul>
5	Chief Operating Officer (COO) Approval	<ul style="list-style-type: none"> <li>Research Office organises COO review and final authorisation</li> </ul>
6	Notification	<ul style="list-style-type: none"> <li>Research Office advise applicant of outcome in writing</li> </ul>

Issue Date: Nov 2022 Review Date: Nov 2025	Page 1 of 2 Version No: 3	NOTE: The electronic version of this document is the most current. Any printed copy cannot be assumed to be the current version.
Protocol Steward: Research Manager, Clinical School	Authorised by: Head of Clinical School	

<p><b>Te Whatu Ora</b> Health New Zealand Hauora a Toi Bay of Plenty</p> <p><b>RESEARCH PROTOCOL</b></p>	<p><b>RESEARCH – LOCALITY APPROVALS PROCESS</b></p>	<p><b>Policy 2.1.7 Protocol 2</b></p>
--	---	---

## 2. Approvals Process – Sponsored Clinical Trials



### ASSOCIATED DOCUMENTS

- Te Whatu Ora Hauora a Toi Bay of Plenty policy 2.1.7 Research
- Te Whatu Ora Hauora a Toi Bay of Plenty policy 2.1.7 protocol 1 Research – Standards and Responsibilities

<p>Issue Date: Nov 2022 Review Date: Nov 2025</p>	<p>Page 2 of 2 Version No: 3</p>	<p>NOTE: The electronic version of this document is the most current. Any printed copy cannot be assumed to be the current version.</p>
<p>Protocol Steward: Research Manager, Clinical School</p>	<p>Authorised by: Head of Clinical School</p>	